

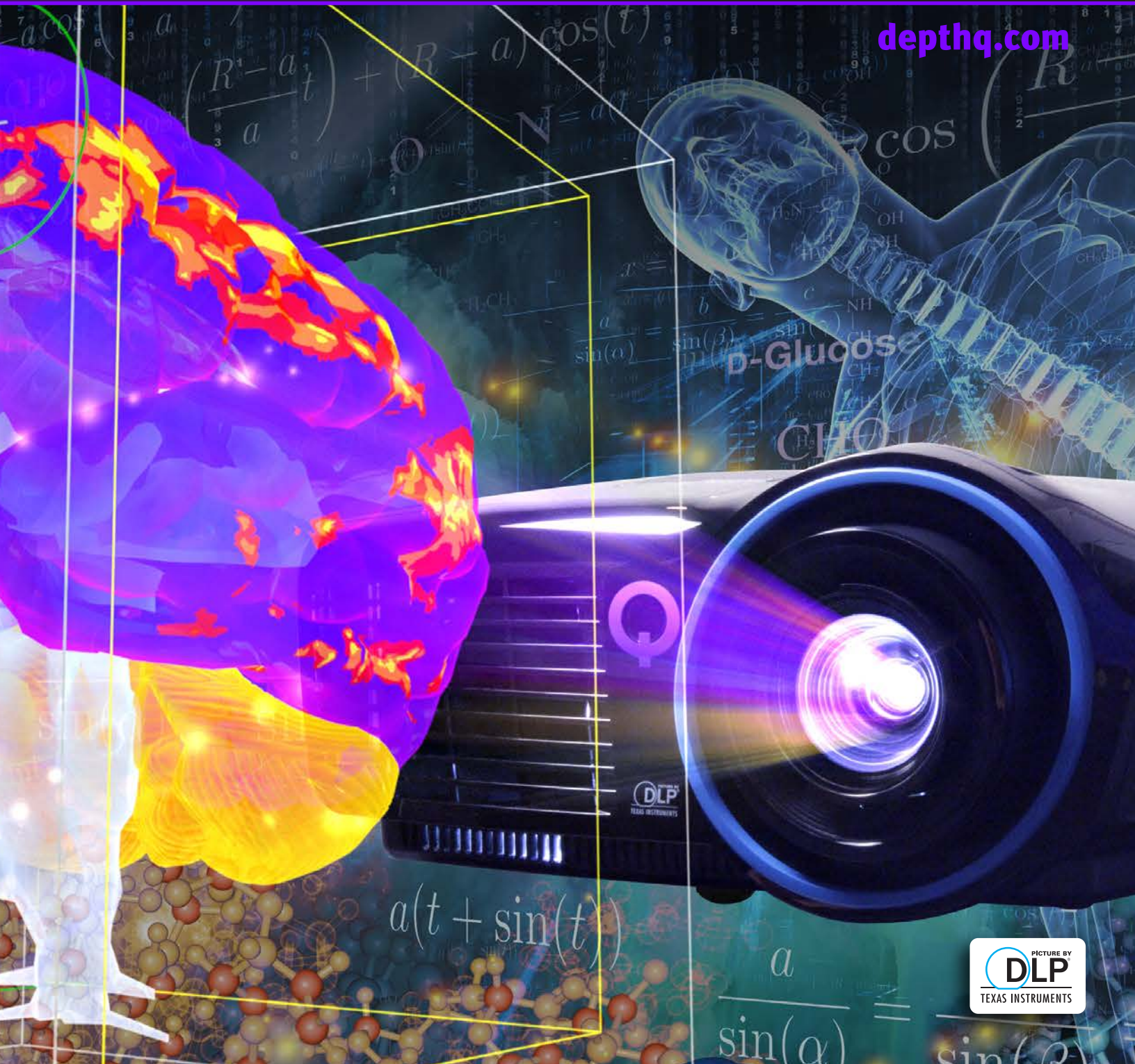
DepthQ[®]

S T E R E O S C O P I C

DepthQ[®] HDs3D2

High-Definition Stereoscopic 3D Projector

depthq.com



DepthQ® HDs3D2 1080p 3D Projector

Our Best Model Yet

Every new generation of DepthQ® 3D Projectors builds on our original patented design and the DepthQ® HDs3D2 is our best model yet - a projector **designed by 3D professionals for 3D professionals.**

New to the HDs3D2 is HDMI 1.4 connectivity, full HD resolution 1080p 2D & 3D (at 24 or 30 image-pairs/sec)*, dedicated 3D sync, plus superior contrast, synchronization and crosstalk - to deliver the highest quality, most satisfying hassle-free 3D experience right out of the box.

DepthQ® HDs3D2 – FULL 3D 1080p

- Native full HD 1080p (1920 x 1080) resolution
- 2500 ANSI lumens
- 10000:1 contrast ratio
- 3D support for Computer, Blu-ray, Sat/Cable Boxes and more
- NVIDIA 3DTV Play™ Ready
- Two HDMI 1.4 inputs, one each of component, S-Video, composite, VGA and more
- VESA standard 3-pin 3D sync output port
- Supports Frame Sequential, Frame Packing, Top/Bottom, and Side-by-Side stereoscopic input formats
- Single and Double Flash 120Hz*, Triple Flash 144Hz output
- 3D color management and 3D combination filter
- Screen trigger and USB power port
- User memory settings
- Internal test patterns, Freeze and Blank Screen function

Stereoscopic 3D

The DepthQ® HDs3D2 supports multiple forms of stereoscopic 3D - including HDMI, Blu-ray, 3D broadcasting, video games and NVIDIA 3DTV PC connectivity – in 1080p Full-HD for your maximum viewing pleasure. Compatible with the DepthQ® Polarization Modulator, Active Shutter Glasses, and 144Hz DLP Link™ 3D glasses.



3D Triple Flash

The DepthQ® HDs3D2 uses the latest Texas Instruments DLP® Dark Chip 3 technology and drivers (DLP 0.65" 1080p s600 DC3) and incorporates 3D Triple Flash technology.

3D Triple Flash triples the normal HDMI 1.4 1080 24p 3D frame rate of 48 Hz (24 for the right eye and 24 for the left) to 144 Hz, for an amazingly fluid and flicker-free 3D experience.

Audio

The DepthQ® HDs3D2 features 10W on-board speaker and SRS WOW HD technology for bigger, larger than life sound effects. So you can take this complete 3D projection system anywhere. No additional audio equipment is required.



*When using a frame sequential double flash mode, the L>R R>L Eye-Coding will be selected randomly upon projector sync. You may have to use your 3D app to change the stereo polarity (swap eyes) to correct for pseudo-stereo. Exiting the app or otherwise causing the projector to re-sync may cause the projector to choose a random eye-coding.

UNISHAPE Lamp Technology

UNISHAPE (UNiversal SHAPed Lamp Light Technology) shapes the light to provide the best possible image output for every millisecond of video – adding contrast to dark scenes, for example, and providing more color variations and brightness exactly where it’s needed. The light waveform shape is repeated in synchronization with the image processor and color wheel of the DepthQ HDs3D2 to achieve the very best possible image output.

- Up to 40% brighter*
- At least 60% less dithering noise*
- At least 80% more colors*
- Up to 100% higher contrast*

*Than conventional DVE CW projection systems, depending on projector

Variable Plateau

This is the solution to the problem that the brightness of the image is reduced in existing technologies due to color correction and dark video enhancement. UNISHAPE™ counteracts this effect by adapting lamp output dynamically to the color wheel segment.

- Up to 40% brighter image*
- Flexible color correction
- Loss-free adjustment of white point
- Full digital control

*Compared to DVE color wheel system

Low Pulse

Above all, UNISHAPE™ microsecond-precision reduction of light power adapted to the image delivers more colors and better color gradation. Each 50% low pulse doubles the number of true colors and halves the dithering noise.

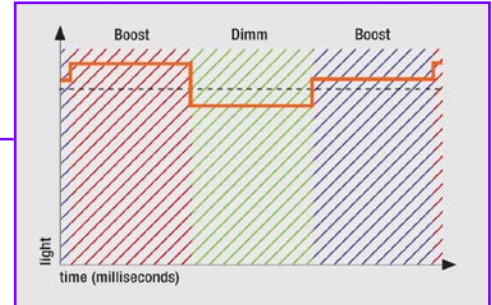
- Increases color bit depth
- More colors (1–2 additional bits per color possible)
- Improved color gradients
- Effective image improvement of dark frames

Dynamic Dimming

Especially for dark scenes, conventional technologies have the problem of unsatisfactory color reproduction and contrast. UNISHAPE™ with dynamic dimming adapts with millisecond precision to the differences in brightness in the image. That leads to greater contrast and a “blacker black.”

- Up to 43% more colors in dark scenes*
- Higher contrast ratio*
- Replaces the need for mechanical aperture
- Allows smaller projector designs

*In comparison to projection systems without light modulation



Connectivity

The DepthQ® HDs3D2 comes fully loaded with the latest and complete set of connections:

- HDMI 1.4 x 2 (HDMI cable included)
- VESA 3D sync out
- RS232
- Component
- S-Video
- Composite
- VGA
- USB Type-A (power only)
- USB Mini-B (service only)
- 12V screen trigger
- RCA stereo audio in (L/R)
- 3.5mm stereo audio in
- 3.5mm stereo audio out



Specifications*

DepthQ® HDs3D2

Native Resolution	1080p (1920 × 1080)
Display Technology	DLP 0.65" 1080p s600 DC3
Data Processor	2 × LVDS, Max 175MHz, DDP4422
Brightness	2500 ANSI lumens (2000 ANSI lumens Eco Mode)
Brightness Uniformity	95%
Lamp Life**	6,000 hours (Eco Mode), 4,500 hours (Standard Mode)
Lamp Type	OSRAM UNISHAPE™ lamp with Dynamic Dimming, Low Pulse with µsec precision and Dynamic Variable Plateau Technology
Contrast Ratio	10000:1
Input Connections	HDMI 1.4 × 2, VGA, Component, S-Video, Composite, RCA stereo audio in (L/R), 3.5mm stereo audio in
Output Connections	3.5mm stereo audio out
Control	3D sync out, RS232, 12V screen trigger, USB Mini-B (service), USB Type-A (power only) 5V, 1.5A
Stereoscopic 3D	VESA 3D Sync Port for DepthQ® Polarization Modulator or IR emitter + 3D glasses. Supports all major 3D standards for DLP projectors, including 3D content from PC, Blu-ray, Cable boxes, Dish services, and more (over HDMI at 1080p). Also supports DLP-Link™ 3D glasses.
Video Compatibility	NTSC/NTSC 4.43, PAL B/G/H/I/M/N 60, SECAM, 1080p/720p/480p/480i
3D Data Compatibility	FHD (1920x1080), HD (1280x720), WXGA (1280x800), XGA (1024x768), SVGA (800x600)
2D Data Compatibility	WUXGA, UXGA, SXGA+, SXGA, WXGA, XGA, SVGA, VGA, Mac NTSC/PAL/SECAM, SDTV: 576i, 480i, EDTV: 576p, 480p, HDTV: 1080p, 1080i, 720p
Color Wheel	6-segment (RGBCMY)
Color Reproduction	Graphic/Video: 30 bit 1 billion true color
Lens Type	Manual zoom, Manual focus
Aspect Ratio	16:9 (native), 16:10, 4:3, letter box, 2.35:1 (supported)
Throw Ratio	1.39~2.09:1
Zoom Ratio	Optical zoom: 1.5:1, Digital zoom: 21 steps
Image Size	25.4 cm - 4.27 m (10 in - 14 ft)
Projection Distance	53.1 cm – 8.9 m (20.9 in – 29.3 ft)
H/V Image Shift	+50 -50 pixels (100 total)
Sync - Horizontal Scan Freq	15, 30-90KHz
- Vertical Scan Freq	43-85 Hz (120Hz)
Projection Offset	~15% of the Projected Image Height, assuming level projector
Keystone Correction	+/- 40° (vertical only)
Audio	SRS WOW, 10 W speaker
Audible Noise	33 dB (Standard Mode), 29 dB (Eco Mode)
Power Supply	AC input 100~240 Voltage (auto ranging)
Power Consumption	350 W (Standard Mode), 290 W (Eco Mode), <0.5 W (Standby Mode)
Product Weight	6.94 lbs / 3.15 kg
Product Dimensions (W×D×H)	11.2 x 10.3 x 4.8 in / 285 × 261 × 122 mm
Shipping Weight	10.25 lbs / 4.65 kg
Shipping Dim's (W×D×H)	14.5 x 15.4 x 8.2 in / 369 × 392 × 208 mm
Security Features	Security lock slot, Security bar
Warranty	2 years (projector), 6 months (lamp), 90 days (accessories)
Ships with - Accessories	Remote control, Lamp, Lens Cap, Power cord (US), DVI to HDMI cable, HDMI cable, Quick Start Guide
Menu Languages	Arabic, Brazilian Portuguese, Danish, Dutch, English, Finnish, French, German, Italian, Japanese, Kazakh, Korean, Norwegian, Portuguese, Russian, Simplified Chinese, Spanish, Swedish, Traditional Chinese, Turkish, Vietnamese
Approvals	CB (International), CCC (China), CE (Europe), C-Tick (Australia), cUL (Canada), EAC (Russia), FCC-B (USA), PSB (Singapore), TUV-GS (Germany), UL (USA)

* Product specifications, terms, and offerings are subject to change at any time without notice.

** Actual lamp life may vary based on the ambient environment and projector usage. Conditions that may affect lamp life include temperature, altitude, and rapidly switching the projector on and off.



by Lightspeed Design, Inc.



Lightspeed Design, Inc.

1611 116th Ave NE, Suite 112
Bellevue, WA USA
+1 (425) 637-2818
sales@depthq.com
depthq.com/projector